

**NO** PRINT COULD  
EVER CAPTURE THE  
KINETIC ENERGY  
OF LEI MING –  
PAINT THROWN TO  
CANVAS, HARNESSING  
BRILLIANT CHAOS  
UNTIL THE ABSTRACT  
BECOMES VIVIDLY  
CLEAR. WE OFFER HIS  
PIECES AS ORIGINAL  
OILS. THE SUBJECT  
REMAINS THE SAME,  
BUT EACH PAINTING  
CREATES ITSELF.

---

DETAIL OF RABBIT  
UNIVERSE BY LEI MING  
JRO-2530

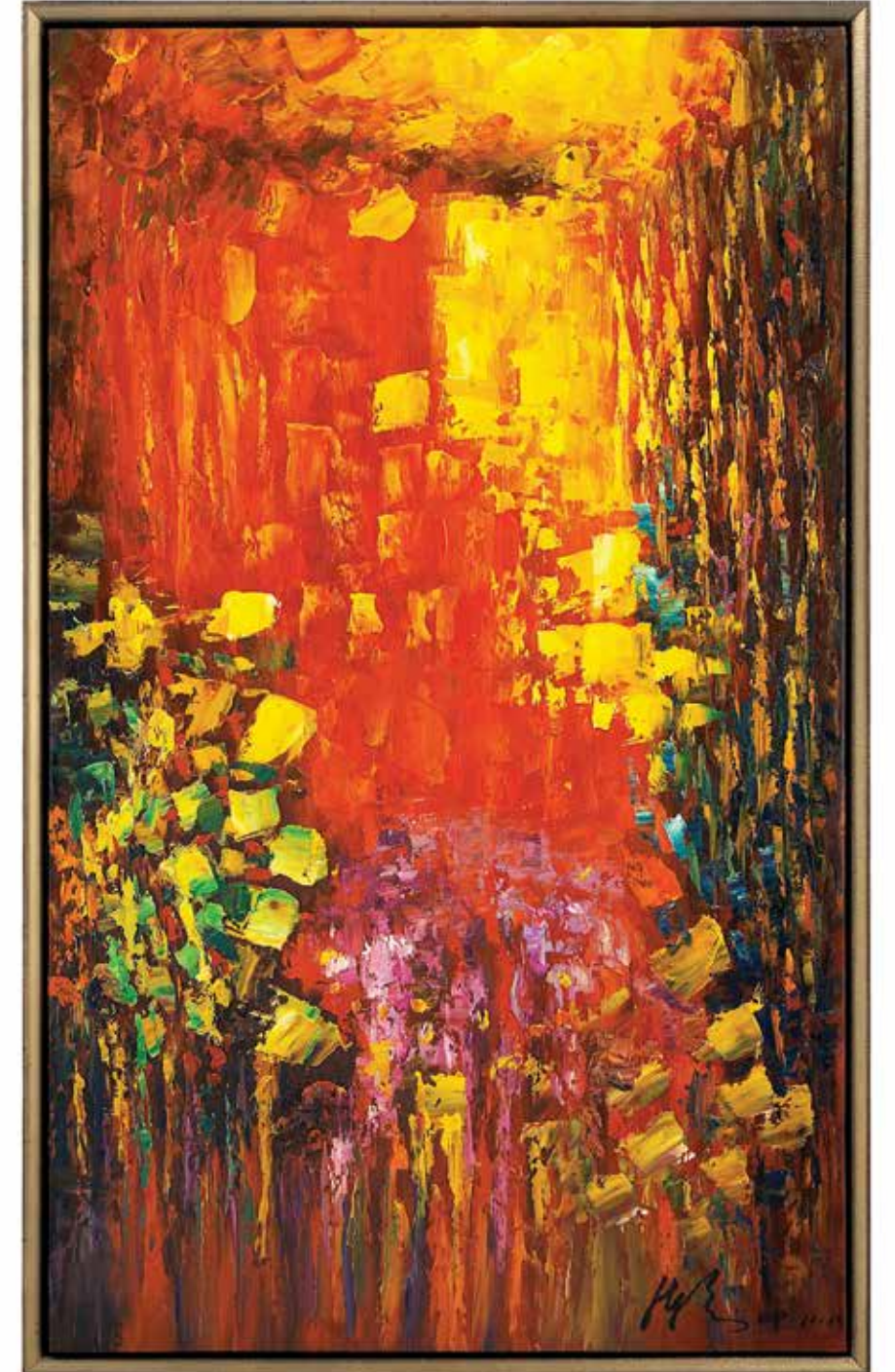


**JRO-2444**  
72"W X 49"H  
Artist - Jinlu  
Blue



**JRO-2449**  
72"W X 49"H  
Artist - Jinlu  
**Blue Luster**  
A framed oil covered with a lustrous  
clear glazing.

**JRO-2446**  
38"W X 62"H  
Artist - Chen Jin  
**Mountain Flame**





**JRO-2432**  
50"W X 72"H  
Artist - Jinlu  
Lava Flow II



**JRO-2582S4**  
24"W X 28"H  
Artist - Jinlu  
Embers (set of four)

Jinlu turns up the heat in his group of smaller oil paintings "Embers". Each is framed individually on wooden stretchers with wide, shallow hand-finished gallery frames. The outer frames are in aged espresso brown with a light neutral rabbet.



**JRO-2337**  
70"W X 50"H  
Artist - Jinlu  
Abstract



**JRO-2078**  
69"W X 49"H  
Artist - Jinlu  
Lines



**JRO-1874**  
53"W X 65"H  
Artist - Chen  
Light Within



**JRO-2551**  
86"W X 39"H  
Artist - Jinlu  
Slickers



**JRO-2575**  
**59"W X 59"H**  
**Artist - Jinlu**  
**Willow Study**

Jinlu has a way with colors. In his oil painting "Color Study: Willow", he has captured the color play of willow greens and sky blues in water. The deep gallery frame is hand finished in glazed bronze metallic with black interior.



**JRO-2482**  
**62"W X 62"H X 3"D**  
**Artist - Jinlu**  
**Sugar Cone**



**JRO-2581**  
**35"W X 48"H**  
**Artist - Jinlu**  
**The Confetti Garden**



**JRO-2579**  
**60"W X 42"H**  
**Artist - Jinlu**

**And The Living Is Easy**

Jinlu extends his invitation to relax in "The Living is Easy". His lush abstract is filled with a riot of green, blue & yellow. The canvas sits in wide shallow gallery frame hand finished in accent colors of acid aged coffee brown and ivory.



**JRO-2549**  
**79"W X 57"H**  
**Artist - Jinlu**  
**Goldenrod**



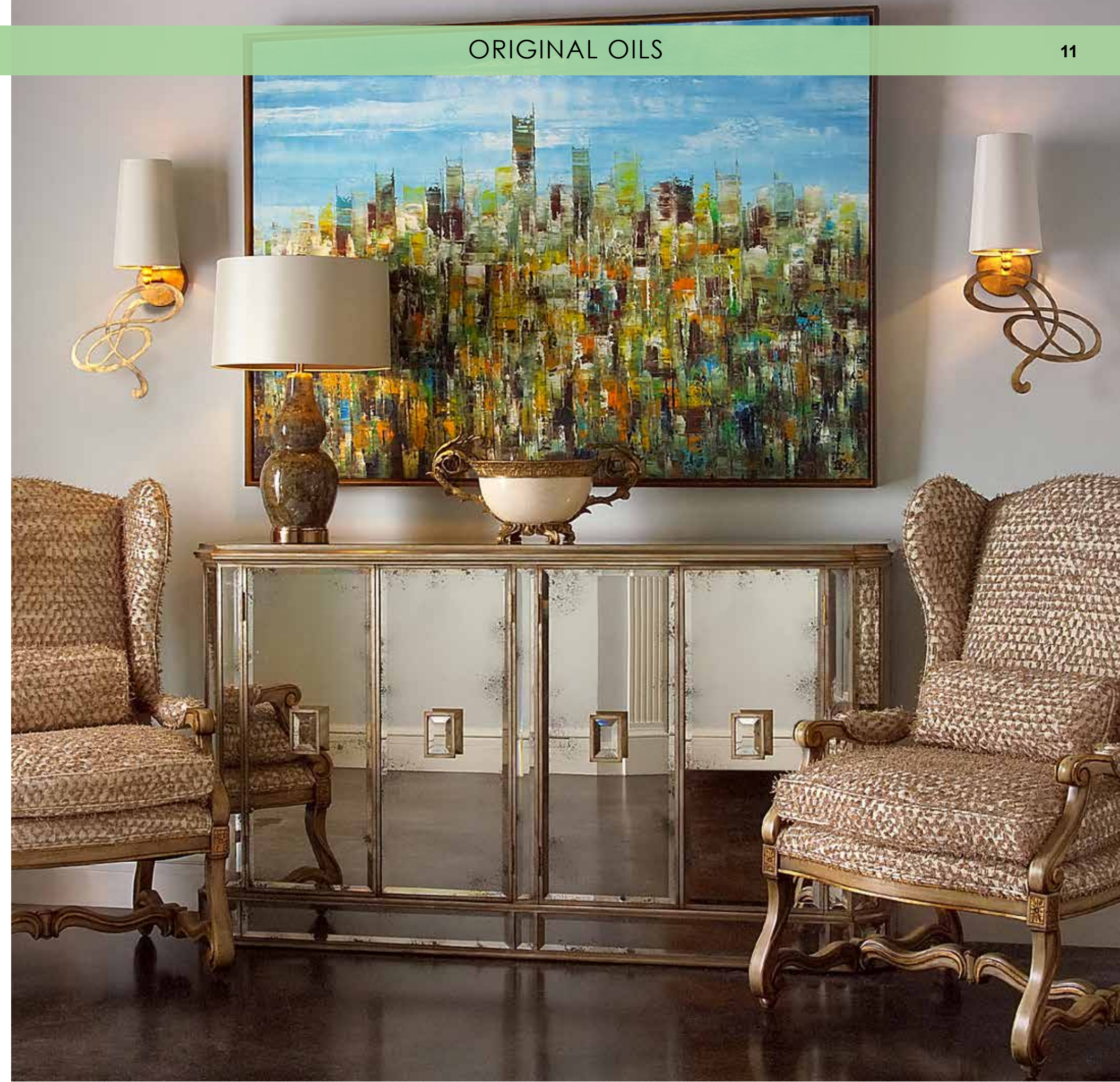
**JRO-2614**  
**63"W X 43H X 2"D**  
**Artist - Jinlu**  
**Carousel**

"Carousel" is an original oil by Jinlu painted in the abstract impressionist style that exudes the lyrical, playful quality found in much of his work. It is presented in a hand glazed silver floater frame.



**JRO-2574**  
**70"W X 50"H**  
**Artist - Jinlu**  
**Window Of The Morning**

A commuter's eye view of a city washed in colors of spring comes to life in Jinlu's oil on canvas, "Window of the Morning Train". Image is surrounded by deep floater frame hand finished with dark bronze metallic face & accent yellow-orange rabbit.





**JRO-1959**  
79"W X 79"H  
Artist - Renaud  
M. Baroni And Miroir Aux



**JRO-2284**  
70"W X 60"H  
Artist - Sasha  
Circle Abstract



**JRO-2477**  
72"W X 61"H  
Artist - Tec  
Follow The Sun



**JRO-2480**  
82"W X 62"H  
Artist - Jinlu  
New Crop

**JRO-1377**  
61"W X 47"H  
Impression Sunrise



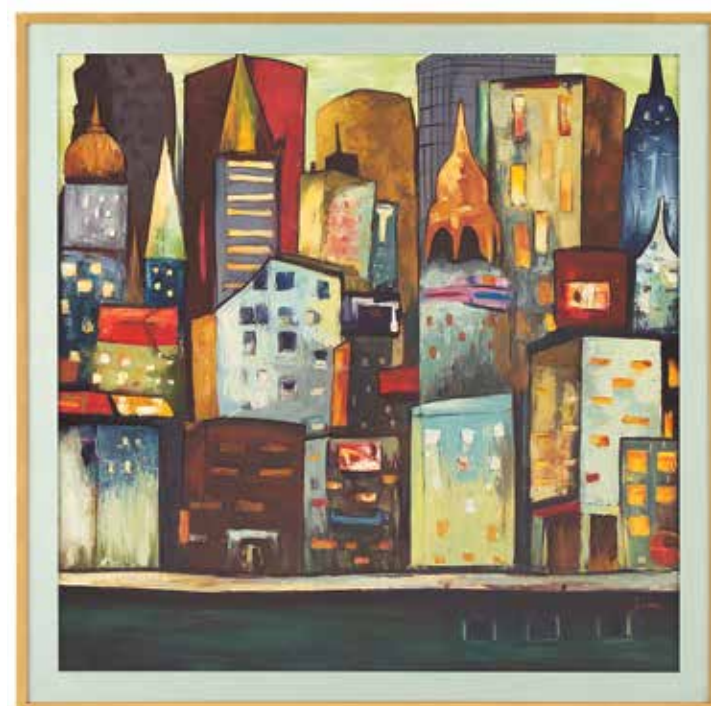


**JRO-2572**  
57"W X 57"H  
Artist - Chen Qi  
**Merlin III**

Chen Qi's abstract, Merlin III, captures the sweeping bold magic of a love potion. Executed in oils on canvas and mounted in a custom finished floater frame with aged pewter metallic face and accent red rabbit.

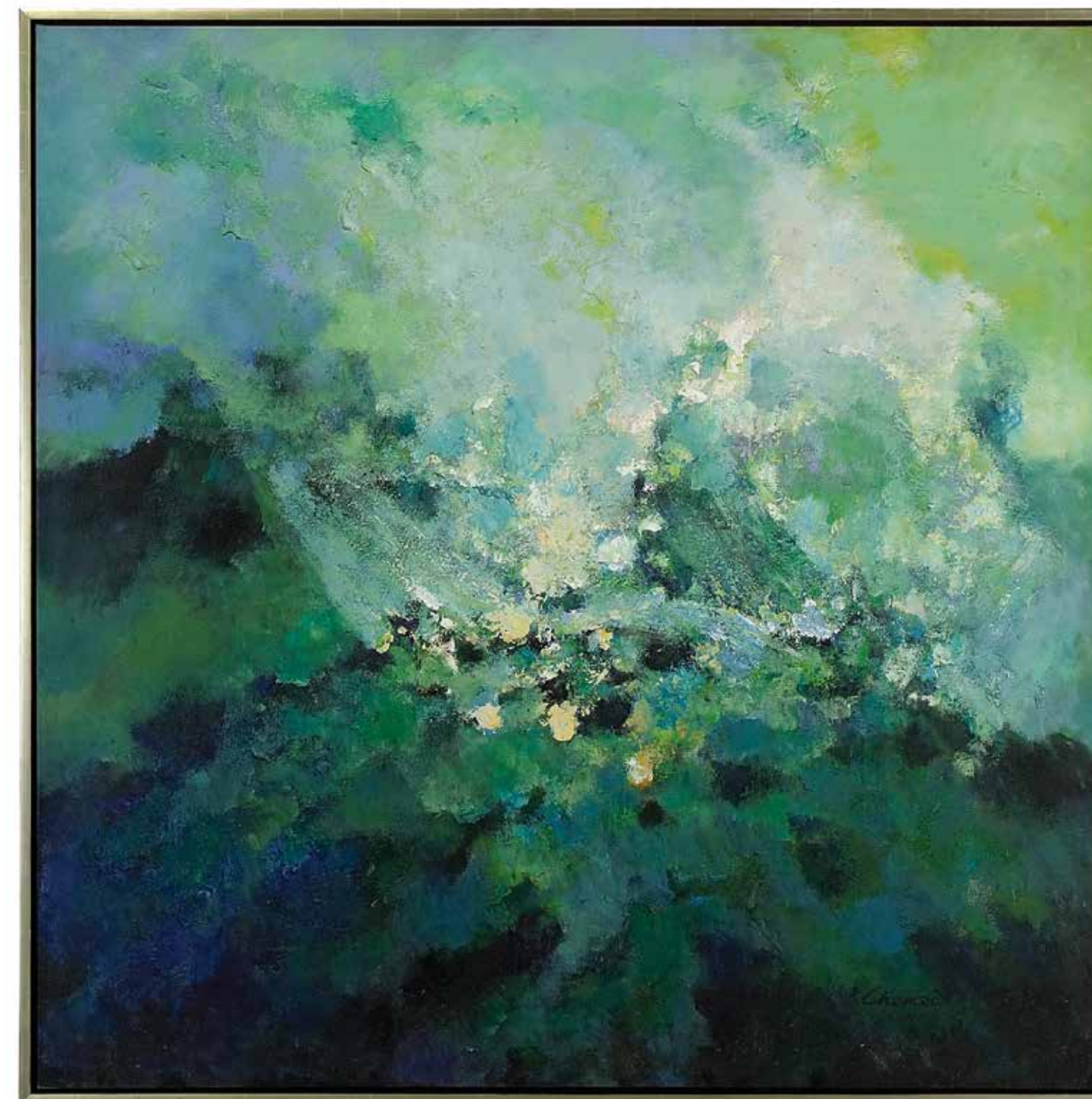


**JRO-2129**  
50"W X 50"H  
Artist - Sasha  
**Bicycle**



**JRO-2599**  
53"W X 53"H  
Artist - Raul Jara  
**Doorknobs Have Names**

"The Doorknobs Have Names" is an original oil by Peru's Raul Jara. Jara's color palate and off kilter rendering of the buildings of New York City hint at his emotions on his first visit. (The title is from an American rock song.)



**JRO-2207**  
61"W X 61"H  
Artist - Chen Qi  
**Green And Blue Abstract**



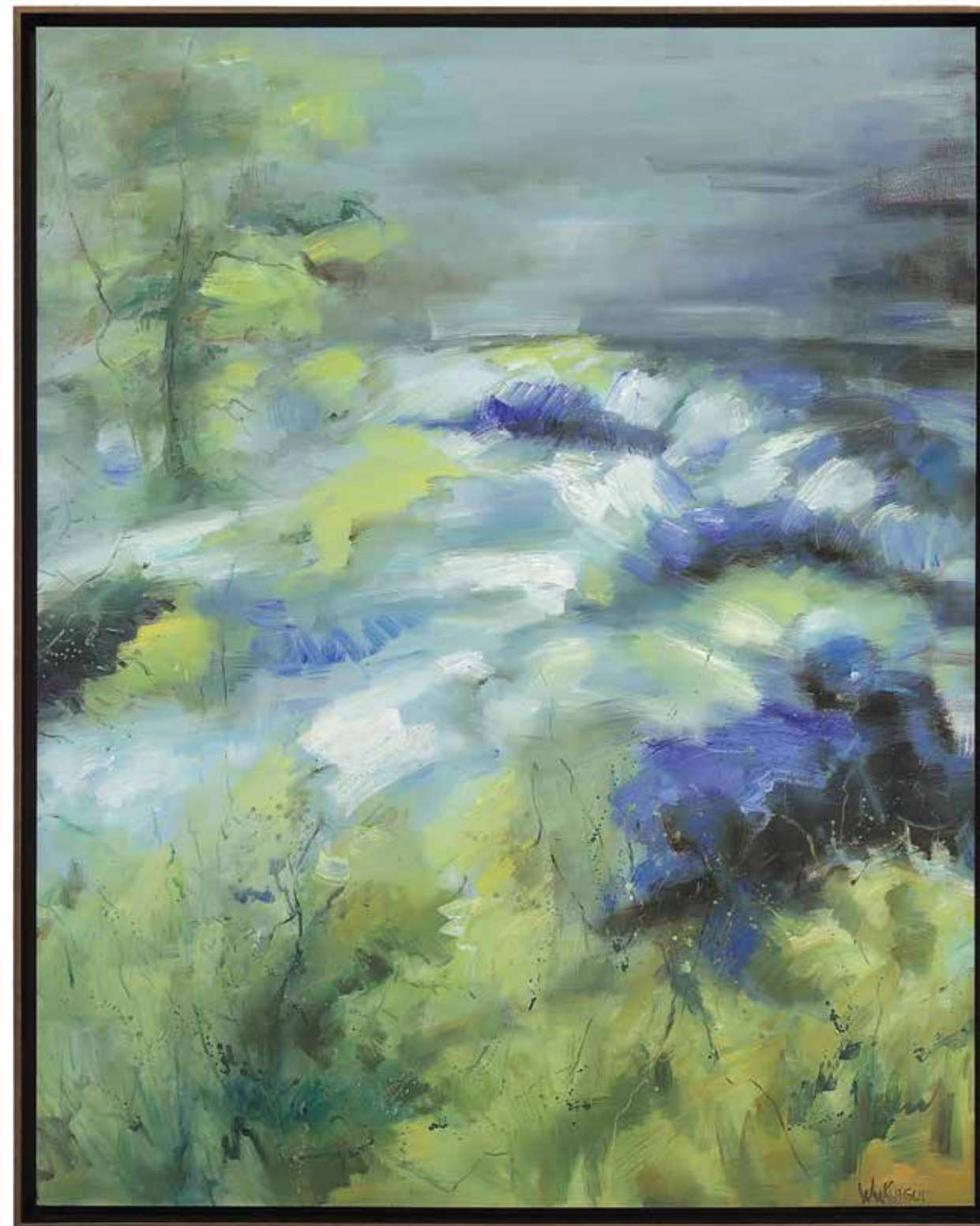


**JRO-2435**  
58"W X 58"H  
Artist - Chen Qi  
Umber Mountain

**JRO-1574**  
46"W X 54"H  
Evening Landscape



**JRO-1573**  
46"W X 54"H  
Dawn Landscape

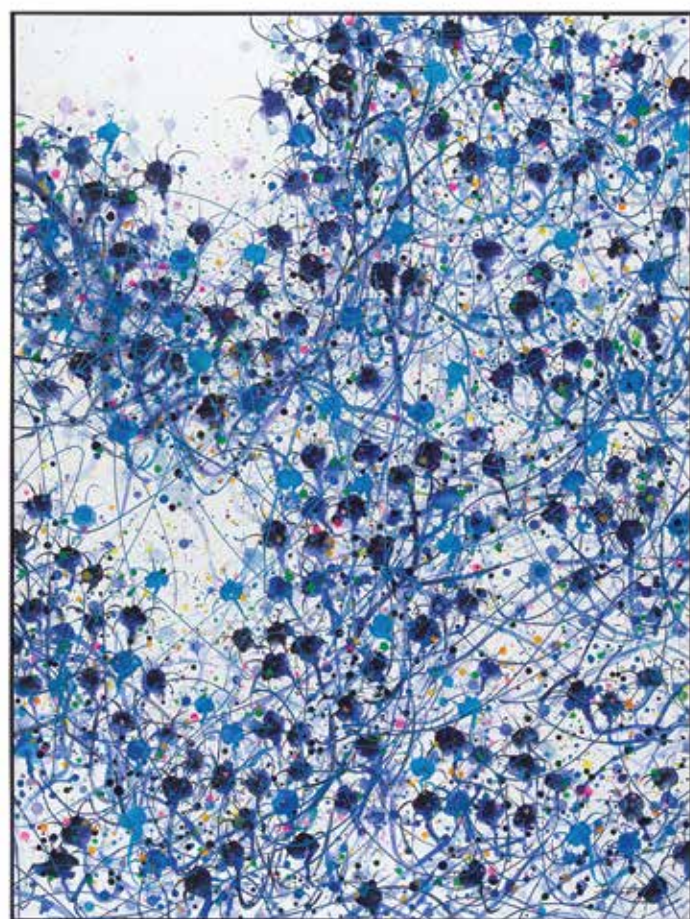


**JRO-2552**  
61"W X 77"H  
Artist - Wu Ruiqiu  
Mount Leconte



**JRO-2591**  
**78"W X 78"H**  
**Artist - Teng Fei**  
**Splash Of Gold**

Both the subtleties of traditional Chinese brushwork & the boldness of the contemporary abstract painter he is, artist Teng Fei has created a statement work in "Splash of Gold". The grand-scale oil is wrapped in satin black wooden outer frame.



**JRO-2569**  
51"W X 67"H  
Artist - Teng Fei  
Abstract Blue



**JRO-2307**  
79"W X 79"H  
Artist - Renaud  
Jardin Fleurs Rouges



**JRO-2586**  
63"W X 43"H  
Artist - Youngson  
Lake Snow

Snow is falling softly in Yongson's texture study "Lake Snow" in winter whites with a touch of pale sky blue. The oil sits in a wooden gallery frame finished with silver metal leaf on the face & taupe grey interior. Piece can hang vertically or horizontal.



**JRO-2593**

51"W X 51"H

Artist - Ruan Wei

Traveler

In his mixed media assemblage, "Traveler", artist Ruan Wei has used three-dimensional letters and paints in shades of charcoal, grey, sepia and white. In contrast, the frame is finished with glazed silver metal leaf face and satin black interior.



**JRO-2596**

43"W X 63"H

Artist - Yongson

Imp Rent

Yongson's "Imp Rent" uses letters, soft textures, and shading in wool white, grey and charcoal with patches of gold metallic. A hand finished gallery frame has subtle texture in champagne silver metal leaf with bronze metallic rabbit.



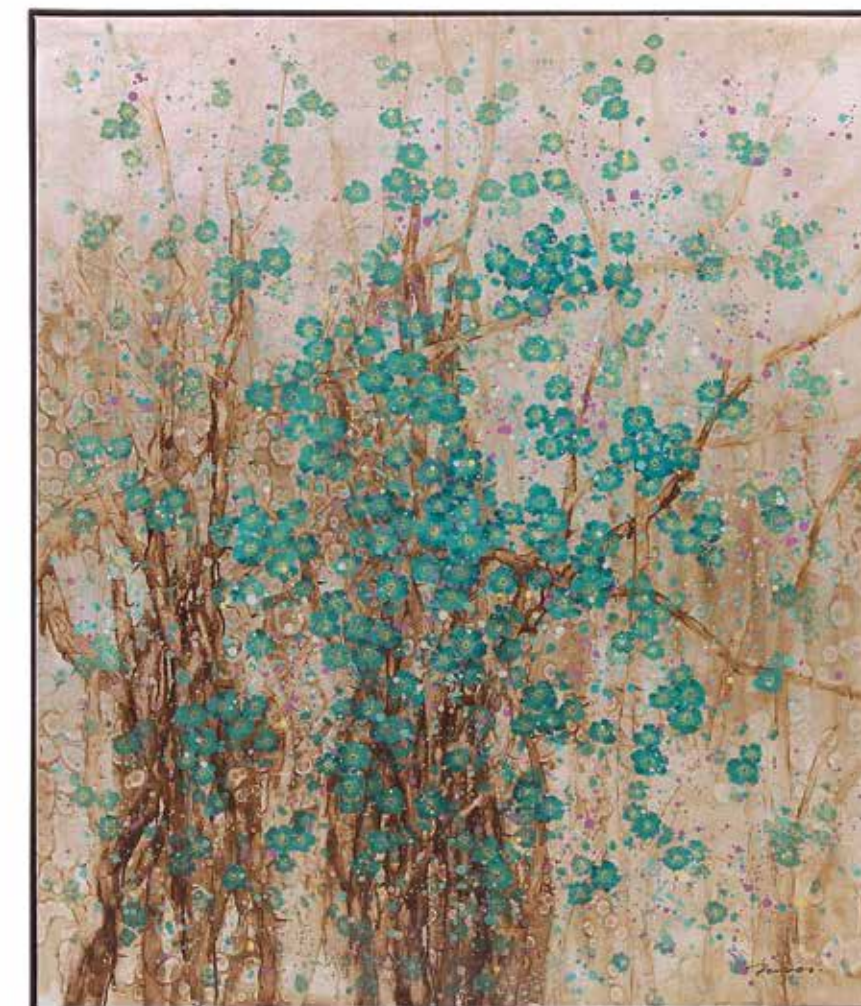
**JRO-2566**  
51"W X 59"H  
Artist - Teng Fei  
Plum Blossom I

**JRO-2565**  
51"W X 59"H  
Artist - Teng Fei  
Plum Blossom II



**JRO-2598**  
51"W X 60"H  
Artist - Teng Fei  
Verse Of Spring

**JRO-2589**  
51"W X 60"H  
Artist - Teng Fei  
Pittore



Artist Teng Fei updates traditional art of Chinese watercolor with "Verse of Spring" and "Pittore". He executes these subtle brushwork techniques in oil paints on canvas covered in silver metal leaf. Oil is closely wrapped in a thin gallery frame in satin black.



**JRO-2603**  
64"W X 49"H x 3"D  
Artist - Zhu Younglong  
Chrysalis II

Younglong's technique, hues and simplistic form come together in "Chrysalis II". The original mixed media canvas is stretched on wide stretcher and mounted in a hand finished floater frame faced in glazed bronze metal leaf with accent pearlescent blue.

**JRO-2604**

50"W X 50"H X 2"D

Artist - Cai Zhicheng

Splat!

Cai Zhicheng's original abstract oil "Splat!", is representative of his off-beat sense of humor. This oil on canvas is presented here in a glazed pewter floater frame.



**JRO-2529**

73"W X 50"H

Artist - Leiming

Beta

**JRO-2530**

74"W X 51"H

Artist - Leiming

Rabbit Universe





JRO-2494  
41"W X 61"H  
Artist - Leiming  
Dancing Tulip



JRO-2475  
49"W X 72"H  
Artist - Leiming  
Dragonflies Of Venus



JRO-2419  
49"W X 72"H  
Artist - Leiming  
Ganglia



JRO-2420  
49"W X 72"H  
Artist - Leiming  
Synapse





**JRO-2528**  
51"W X 75"H  
Artist - Leiming  
Running In The Wind



**JRO-2421**  
72"W X 49"H  
Artist - Leiming  
Horse





**JRO-2097**  
82"W X 54"H  
Artist - Renaud  
Party At The Beach



**JRO-2262**  
41"W X 69"H  
Artist - Renaud  
Roxanne



**JRO-1933**  
63"W X 79"H  
Artist - Renaud  
Chien En Costume



**JRO-2017**  
52"W X 78"H  
Artist - Renaud  
Lady With Parasol



**JRO-2597**  
56"W X 79"H  
Artist - Renaud  
Locomotive



Artist Roland Renaud's "Locomotive" rolls by, crisp in its emerald green and white. Renaud has painted his vintage engine on pieces of salvaged metal. Although the image will remain the same, due to the medium, no two pieces will be exactly alike.

**JRO-2471**  
61"W X 49"H  
Artist - Roland  
Desoto

A bug's eye view of a classic Desoto grille. His choice of a cool black and white color palate is evocative of the era. The piece is stretched on an extra thick stretcher, 2", and floats in a hand-finished floater frame in matte black.





**JRO-2567**  
71"W X 98"H  
Artist - Wu Haicheng  
Oriental Banquet Oil On Canvas Mounted On Solid Panel



**JRO-1876**  
47"W X 43"H  
Artist - Chen  
Strolling Alone



**JRO-1976**  
51"W X 78"H  
Artist - Lyons  
Tall Trees



**JRO-2331**  
55"W X 55"H  
Artist - Lyons  
Landscape

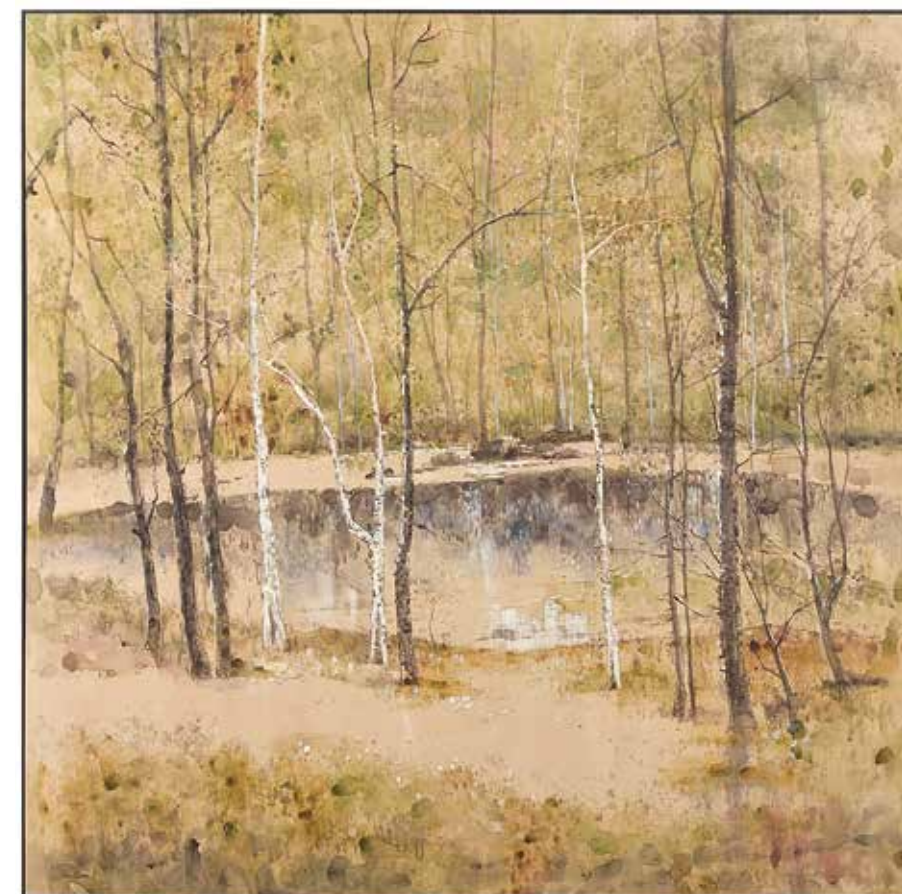




**JRO-2546**  
60"W X 60"H  
Artist - Raissa  
Landscape Dream



**JRO-2570**  
77"W X 77"H  
Artist - Teng Fei  
Frost Tree



**JRO-2590**  
78"W X 78"H  
Artist - Teng Fei  
In A Circle

Using traditional brushwork, artist Teng Fei creates a timeless image in his painting "In a Circle". The almost monochromatic landscape has tones ranging from sage greens to sepia browns & white. Wrapped in a thin gallery frame in satin black



**JRO-1403**  
65"W X 69"H  
Fowl In Tree



**JRO-1921**  
66"W X 38"H  
Artist - Cornejo  
Birds In Branches



**JRO-2378**  
57"W X 57"H  
Artist - Luis Daniel  
Two Birds I



**JRO-2380**  
57"W X 57"H  
Artist - Luis Daniel  
Two Birds II



**JRO-2469**

**50"W X 80"H**

**Artist - Roland**  
**Zephyr Muse**

Silvery grey tones and soft rippled textures create the feeling of soft breezes. The oil painting is stretched and mounted in a sleek floater frame hand finished in matte black and tarnished silver.



**JRO-2033**

**57"W X 73"H**

**Artist - Renaud**  
**Femme Au Chapeau Noir**

